

# P311

## THERMAL TRANSFER RIBBON

### Developed for near edge and corner edge technology printers

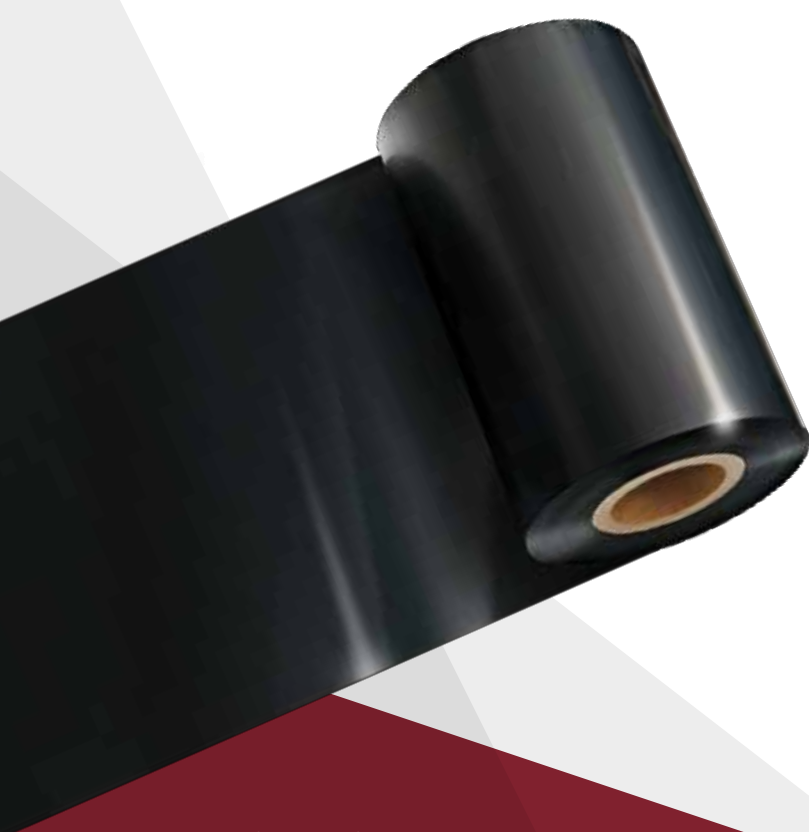
P311 is a high speed low energy flexible resin formulated for online coders and near edge desktop applications where high volume labelling/coding applications are required and where durability is essential. P311 offers versatility over an extremely broad range of flexible films and labels.

RESIN NEAR EDGE  
**RNE**

REQUEST A SAMPLE

## ITW RESIN NEAR EDGE RIBBONS

**P311**  
FLEXIBLE



## CHARACTERISTICS

ENERGY



ABRASION RESISTANCE



HEAT RESISTANCE



SOLVENT RESISTANCE



LABEL ADAPTABILITY



PRINT DENSITY



## FEATURES

- Low printhead energy ●
- Abrasion resistance ●
- Scratch resistance ●
- Print flexibility ●
- High density print ●
- Chemical resistance to common agents ●
- Chemical resistance to hazardous chemicals ●
- High speed ●
- Wide working windows ●
- Anti-static PrintheadSaver® coating ●

## APPLICATIONS

- |                |            |
|----------------|------------|
| AEROSPACE      | INDUSTRIAL |
| FLEX PACKAGING | LUMBER     |
| APPLIANCE      | PHARMA     |
| FRESH PRODUCE  | AUTOMOTIVE |
| FOOD           | TYRES      |
| HEALTHCARE     | WAREHOUSE  |
| HORTICULTURE   |            |



**ITW**  
**SHINEMARK**

# P311

## SUBSTRATES

Papers	Coated, Card
Synthetics	Polyester, Polyethylene, Polypropylene, PVC

## PROPERTIES

Carrier	4.5µm Polyester film
Thickness	< 9.0 µm
Color	Black
Ink melting point	95°C
Optical density (transmission)	> 0.90
Optical density (reflective)	> 1.50



This information is the best currently available on the subject. The results should, however only be regarded as a general guide to material properties and not as a guarantee

## COMPLETE RANGE

ITW Thermal Films produce and supply a range of thermal ribbons for all applications. Contact us for further information on the P311 ribbon and our full product catalogue.

### RESIN ENHANCED WAX

For general purpose labelling



### EXTREME SERIES WAX RESIN™

For optimum print quality



### EXTREME SERIES RESIN™

For demanding applications



### NEAR EDGE

For near edge or corner edge printers



### AMER

40 E Newberry Rd,  
Bloomfield, CT 06002  
AMER.TTR@ITWShineMark.com

### EMEA

Vitruvius Way,  
Meridian Business Park  
Leicester, LE19 1WA, UK  
EMEA.INFO@ITWShineMark.com

### APAC

112 Seonggeo-gil, Seonggeo-eup,  
Seobuk-Gu, Chonan-si,  
Chungchongnam-Do,  
Korea 31044  
WORLD.INFO@ITWShineMark.com

Rev. 03.22